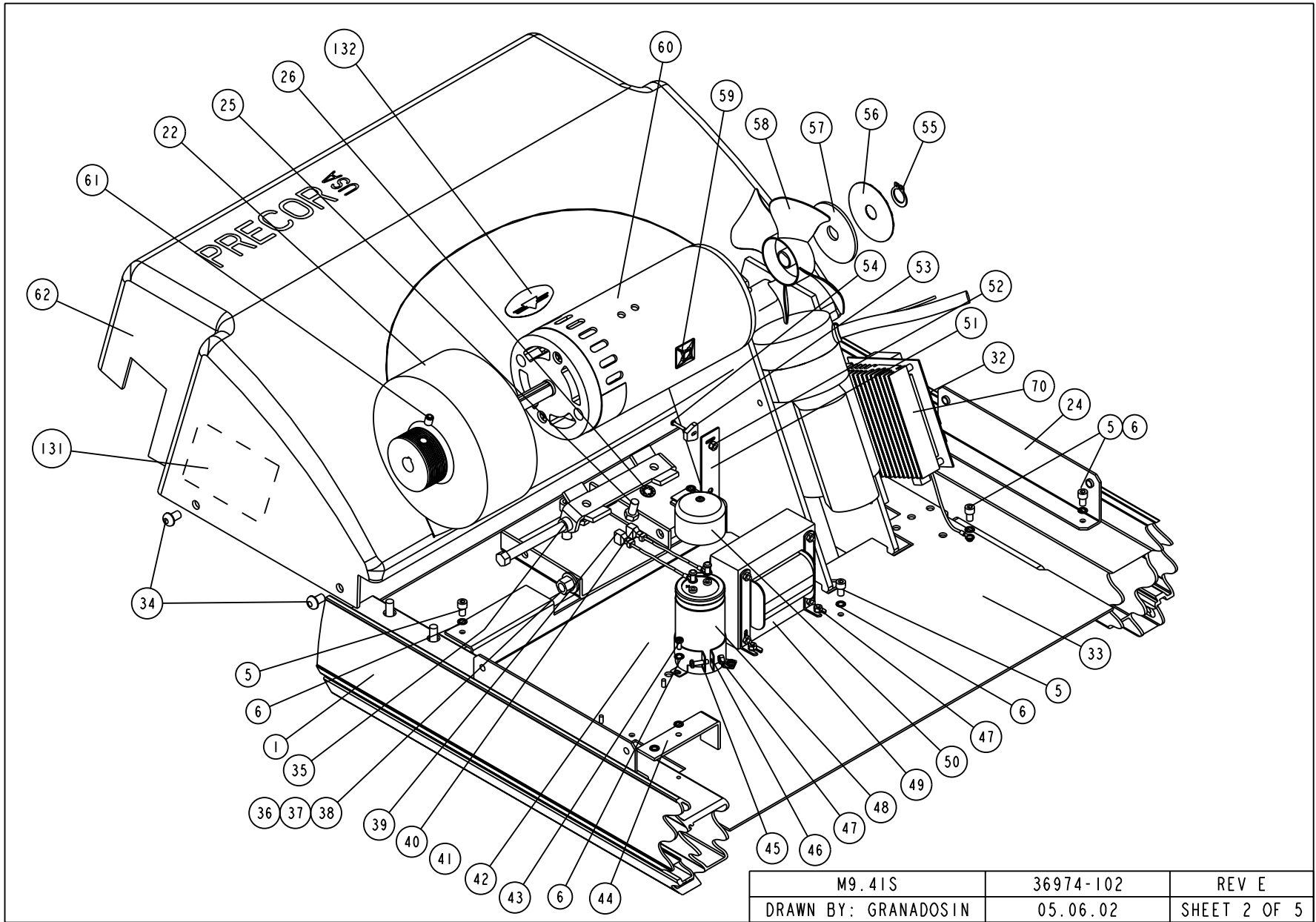
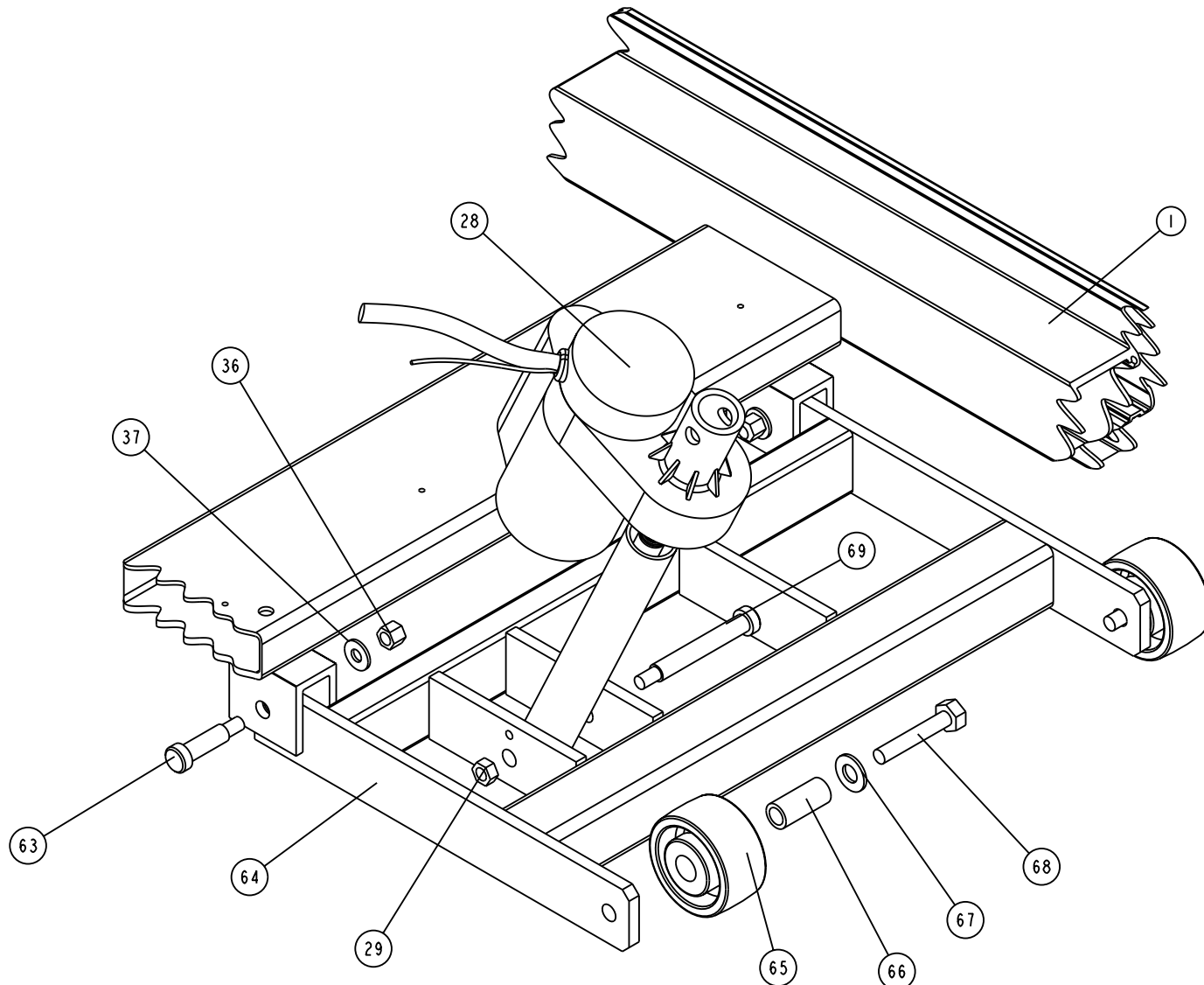
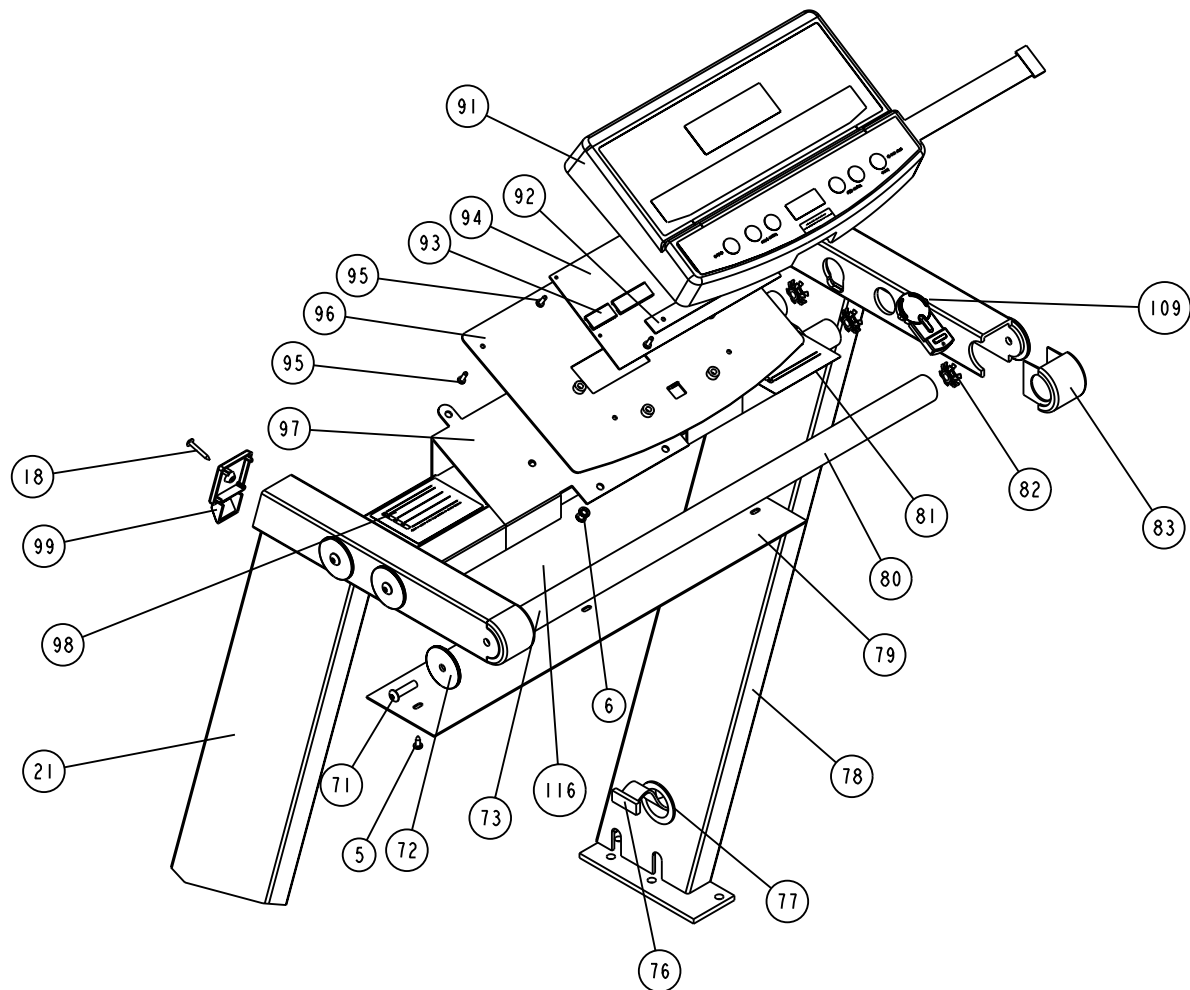


M9.41S	36974-102	REV E
DRAWN BY: GRANADOS IN	05.06.02	SHEET 1 OF 5

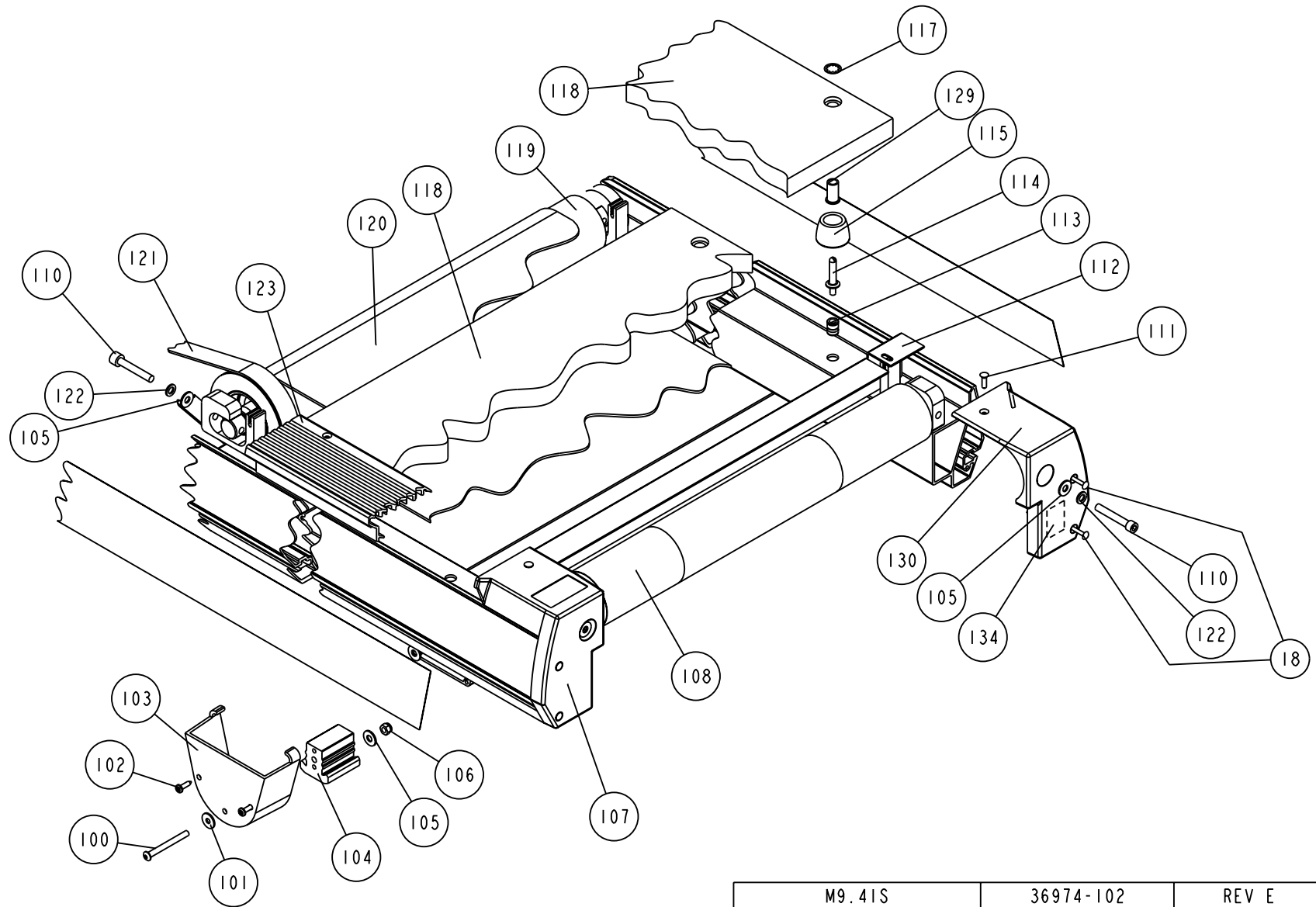




M9.41S	36974-102	REV E
DRAWN BY: GRANADOS IN	05.06.02	SHEET 3 OF 5



M9.41S	36974-102	REV E
DRAWN BY GRANADOSIN	05.06.02	SHEET 4 OF 5



M9.41S	36974-102	REV E
DRAWN BY: GRANADOS IN	05.06.02	SHEET 5 OF 5

9.41s (serial code 1J)

Part Number	Description	Bubble Number
HNCN019-075	SCREW,MCH,10-32X3/4,HEX,ZN	3
MAACN019-075	SCREW,MCH,10-32X3/4,HEX,ZN	3
KHCN019-013	LOCKNUT, STARWASHER, 10-32,	4
WATNN020-002	WASHER, LK-INT, #10, ID=.200,	6
36855-101	ASSY, CABLE, CIRC BRKR CONTROL	7
10435-101	CKT BRKR,250V,MAGNETIC,ROCKER,	9
WCKN025-007	WASHER, PLAIN 1/4 BLACK	9.01
10237-102	LOCKNUT,1-19/64 X 9/32 ,NYLON	10
WALCN038-009	WASHER, 3/8 SPLIT LOCK, ZINC	12
CAKN038-225	SCREW,SKHD,3/8-16X2.25,BLK ZN,LK	13
BNCN031-350	J-BOLT, HOOK, 5/16-18X3.5,ZN	14
36956-102	ASSY, LINE CORD, 120V	15
MGKN013-025	SCREW,MCH,6-32X1/4,PANHD,PHIL,	16
36551-501	PLATE, DRESS, PWM, PAINTED,	17
PGKN016-125	SCREW,S/T,#8X1-1/4,TRS,PHIL,	18
KGCN031-027	LOCKNUT,STARWASHER,5/16-18,1/2	20
59035-101	C94X & 9.4X SILVER TARGA RETRO KIT	21
36548-101	BRACKET, HOOD MOUNTING	24
HDCN031-063	SCREW,HEX,GR 5,5/16-24X5/8,ZN	25
WATNN033-003	WASHER, LK-INT, 5/16, ID=.325,	26
RCNN038-400	SCREW,SHLD,1/2 X 4 ,HEXSC,	27
36893-101	MOTOR, LIFT ACTUATOR, M9.41S	28
KGCN038-033	LOCKNUT, STARWASHER, 3/8-16	29
CAKN025-050	SCREW,SKHD,1/4-20X0.50,BLK ZN,LK	31
37180-102	ASSY, LWR ELECT. MODULE	32
TAKN031-050	SCREW,BTHD,5/16-18X1/2,BLK ZN	34
36872-101	BRACKET, MOTOR PIVOT	35
KDCN038-025	LOCKNUT, FULL, 3/8-16, ZINC	36
WCCN031-008	WASHER, FLT, 5/16X.875X.083	37
HACN038-600	SCREW,3/8-16X6,HEX,GR 2,ZN	38
31894-102	ASSY, CABLE, CAPACITOR TO MTR,	39
31815-105	ASSY, CABLE, CAPICATOR TO MTR,	40
MHCN019-038	SCREW,MCH,10-32X3/8,PANHD,PHIL	41
33272-101	LABEL, CAPACITOR DISCHARGE	42
MGCN016-038	SCREW,MCH,8-32X3/8,PANHD,PHIL,	43
MGCN016-063	SCREW,MCH,8-32X5/8,PANHD,PHIL,	45
10036-101	CLAMP,CAPACITOR,2.0 NOM	46
KGCN016-013	LOCKNUT, STARWASHER 8-32, HEX	47
10035-108	CAP,AL-E,2200UF,200V,2.02 X3.69	48
31551-104	ASSY, INDUCTOR, M9.41S	49
36833-102	ASSY,REMOTE SENSOR,TWISTED	53
MGCN011-063	SCREW,MCH,4-40X5/8,PANHD,PHIL,	54
AAHN063-003	RING, RETAINER, 5/8, EXTERNAL	55
32947-101	LABEL, FLYWHEEL TARGET, WITH	56
36635-102	DISC, TARGET MOUNT	57
10332-101	MOUNT, CABLE TIE	59
36892-104	MOTOR, 2 HP, 3200 RPM, 90V	60
EMKN008-010	SCREW,SET,M8-1.25XM10,KNRLDCUP	61
50974-105	ASSY, HOOD W/LABELS,	62
RANN038-150	SCR,SHLD,1/2 X 1-1/2 ,HEXSC	63

44270-101	WHEEL, LIFT	65
36192-101	BUSHING, SPANNER	66
WBCN050-010	WASHER, FLT, 1/2, ID=.531,	67
HCKN050-250	SCREW,HEX,GR 5,1/2-13X2-1/2,BLK ZN	68
RCNN038-325	SCR,SHLD,1/2 X 3-1/4 ,HEXSC,	69
37437-102	LABEL, FUZE, FIRE HAZARD	70
TAKE031-125	SCREW,BTHD,5/16-18X1-1/4,BLK ZN	71
36191-505	GRIP, HANDRAIL	73
36597-102	TUBE, CROSS, HANDRAIL, PAINTED	73
TAKN025-038	SCREW,BTHD,1/4-20X3/8,BLK ZN	74
MHKN019-038	SCREW,MCH,10-32X3/8,PANHD,PHIL	75
WATNN025-003	WASHER, LK-INT, ID=.25,	75
36858-101	CABLE,UPCA TO LPCA,56	76
37245-501	PLATE, TARGA SHIELD, PAINTED	79
59019-101	ASSY,HANDRAIL	80
37158-104	LABEL, COURSES, RIGHT, M9.41S	81
10385-106	CONNECTOR, TUBE, 5/16-18, 1.25	82
36510-102	CAP, HANDRAIL	83
36897-102	LABEL, DISPLAY, M9.41S	87
36980-101	SPACER, WINDOW, CLEAR PLASTIC	88
50957-105	ASSY, DISPLAY HOUSING W/O	91
37742-101	PCA, SAFETY SWITCH	92
37399-107	PROM, PROGRAMMED V1.07, 9.41S	93
37990-101	PCA, DISPLAY	94
PMKN016-050	SCREW,TCS,#8X1/2,PHIL,BLK ZN,TYPE25	95
36942-501	CHASSIS, DISPLAY, PAINTED,	96
36600-201	WELDMENT, TARGA CROSSMEMBER,PT	97
37158-103	LABEL, COURSES, LEFT, M9.41S	98
36511-101	ENDCAP, TARGA	99
TAKN025-250	SCREW,BTHD,1/4-20X2-1/2,BLK ZN	100
PBKN019-075	SCREW,S/T,#10X3/4,PANHD,PHIL,	102
59006-101	ASSY, REAR FOOT C960	103
36382-103	FOOT, C960	104
WCCN025-007	WASHER, FLT, 1/4X.734X.065	105
KDKN025-023	LOCKNUT, FULL, 1/4-20, BLK ZN	106
31825-102	ASSY, TAKE-UP ROLLER,	108
36409-101	ENDCAP, RIGHT	109
36566-105	ASSY, FAILSAFE CORD,NEW CLIP	109
CAKN031-200	SCREW,SKHD,5/16-18X2,BLK ZN,LK	110
DCKN019-100	SCREW,WOOD #10X1, L=1.00	111
36549-102	GUARD, FINGER, REAR, PAINTED	112
36549-501	GUARD, FINGER, REAR, PAINTED	112
10546-102	NUTSERT, 5/16-18	113
36118-103	STUD, BED, HEX DRIVE	114
37033-101	BUSHING, SOFT DECK	116
TAKN025-038	SCREW,BTHD,1/4-20X3/8,BLK ZN	116
AHHN075-001	RING, RETAINER, CIRCULAR, .50	117
50984-101	ASSY,BED,941/945,STRETCH	118
50988-101	ASSY,BED,9.41S/9.43/9.45-CORE,	118
37577-101	ASSY, DRIVE ROLLER	119
36355-106	RUNNING BELT,SIEGLING 117 X 18	120
36355-108	RUNNING, BELT, SIEGLING	120

10217-103	BELT, DRIVE, 280J10 POLY V	121
WMSN033-006	WASHER, AN960-516, ID=.328,	122
HCCN031-100	SCREW, HEX, GR 5, 5/16-18 X 1.0, ZN	124
HCRN031-100	SCREW,HEX,GR5,5/16-18X1,SIL ZN	124
36610-103	LABEL, SIDE RAIL, RT FRONT,	125
36610-104	LABEL, SIDE RAIL, LT FRONT,	126
36900-103	LABEL, SIDE RAIL, RIGHT REAR,	127
36900-104	LABEL, SIDE RAIL, LEFT REAR,	128
37033-101	BUSHING, SOFT DECK	129
36409-101	ENDCAP, RIGHT	130
37082-102	LABEL, HOOD WIRING DIAGRAM	131
37621-101	LABEL,GROUND EFFECTS,OVAL,DURO-LENZ	132
36122-501	LABEL, CAUTION, GREY	134
36973-104	OWNERS MANUAL 9.41S	202
36620-105	KIT, HARDWARE, C944, M9.41S	203
36674-102	SHIPPER,MONITOR BOX	204
38057-101	SHIPPER,MONITOR BOX	204
36675-101	SHIPPER, INSERT A	205
38054-101	SHIPPER,INSERT,DISPLAY BOX	205
36676-101	SHIPPER, INSERT B	206
36678-105	SHIPPER, FOAM BLOCK, LEFT	207
36678-107	SHIPPER, FOAM BLOCK, LEFT	207
36747-102	SHIPPER, TARGA INSERT	209
36748-102	SHIPPER, TOP END	210
36749-102	SHIPPER, BTM END SCORED PAD	211
36750-103	SHIPPER, TOP END SCORED PAD	212
36750-104	SHIPPER, TOP END SCORED PAD	212
36751-103	SHIPPER, OUTER BOTTOM	213
50973-106	ASSY,SHIPPER,M9.45,C944	214
36752-104	SHIPPER, OUTER TOP	214.01
54002-101	ASSY, PRECOR HEART RATE TEST	220
10427-111	FUSE,SLOW,.25A,250V,1/4 DIA	221
10427-140	FUSE,SLOW,2A,250V,1/4 DIA	222
10427-111	FUSE,SLOW,.25A,250V,1/4 DIA	250
10427-140	FUSE,SLOW,2A,250V,1/4 DIA	251
10186-103	WRENCH, ALLEN, 3/16	273